



Civil Site Design PLUS

Guide to installing Civil Site Design Plus

Civil Site Design Plus | Installation and Licensing Instructions

ABOUT THIS LICENSING GUIDE

This Licensing Guide is applicable for installation of Civil Site Design Plus V24.10 and later.

Installation

Installation occurs via the single installation .exe.

After starting the installation process, you will be advised that this is a two stage installation:

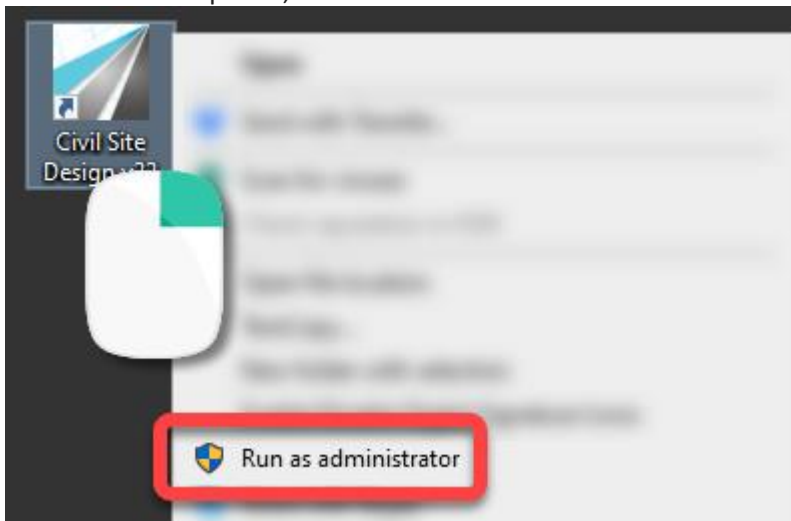
1. Firstly, Civil Site Design files are installed, then
2. Another installation interface will display to install the AutoCAD OEM components. Click Install to proceed

Following installation, you will find the program Civil Site Design Plus has been installed and include a shortcut on the Windows Desktop to run the software.

First Time Running the Software – IMPORTANT NOTE

The first time Civil Site Design Plus is run after the installation, it will need to be run in administrator mode in order to set up the license. This is simple to do:

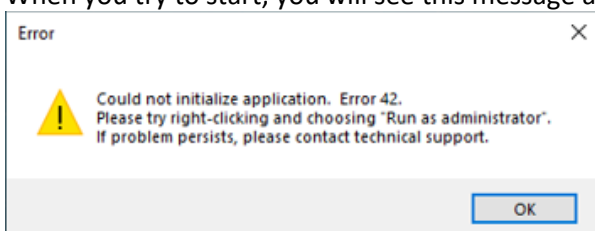
- Right-click on the program icon (shortcut) from the Windows screen
- From the list of options, choose 'Run as Administrator'



This only needs to be done once. After that, you can open via double click or other method.

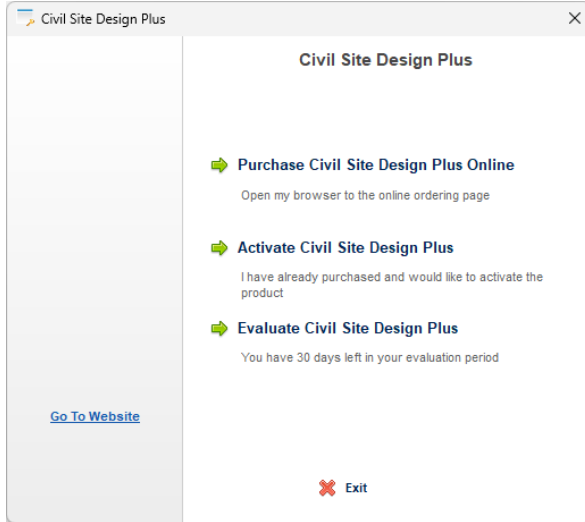
What if you don't run in Administrator mode?

When you try to start, you will see this message and the software will not open:



Licensing Activation

1. Start Civil Site Design Plus. The following form will display:



Just evaluating?

Simply click on **Evaluate Civil Site Design Plus** to operate the software for up to 30 days.

Ready to Buy?

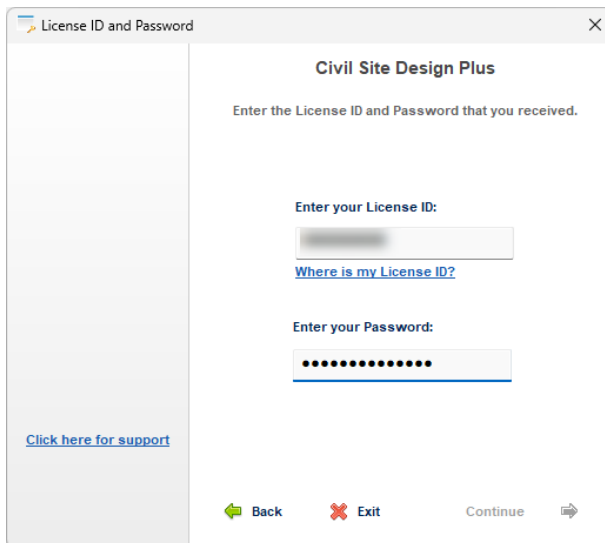
If you're ready to buy the software, please contact your local reseller who has recommended the software to you or been assisting during your evaluation. If you don't have a preferred reseller, you can click on **Purchase Civil Site Design Plus Online** to purchase.

Following purchase, you will be issued your License ID and Password.

Have a License?

If you have been issued with a license, please follow the steps below to active your product:

2. Click on **Activate Civil Site Design Plus**. The following form will display:



3. Enter the **License ID** and **Password** provided to you.
4. Click the **Continue** button for online activation

Note: An internet connection is required for successful activation of your software

Upon activation, Civil Site Design Plus will open.

What if the License Activation is Unsuccessful?

If the software does not start please click on the **Click here for support** link. This will direct you to our helpdesk – click on Submit a Ticket and follow the steps to send us a support request. It will be helpful to provide a screen shot of any messages or otherwise document what messages display.

If you purchased through your local reseller, you can alternately contact them for assistance.

A screen shot of the Civil Site Design Plus Activation page displaying both the User Codes and Activation Code/s will be required.